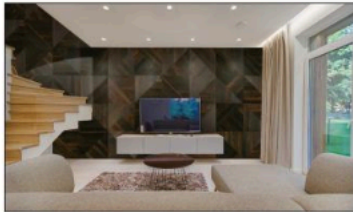
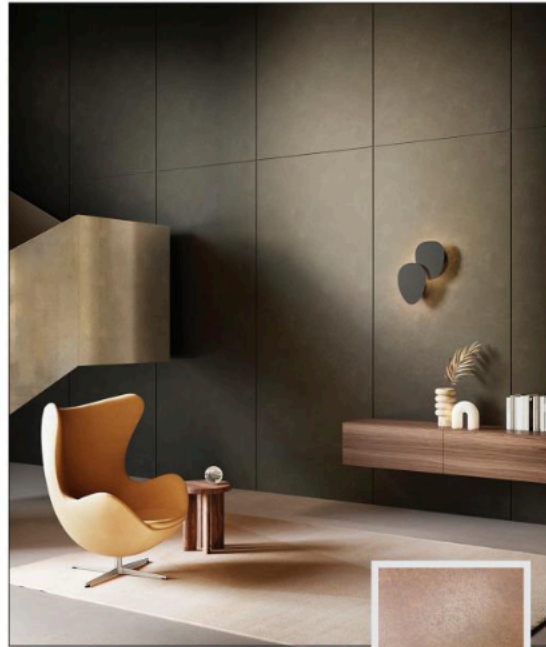


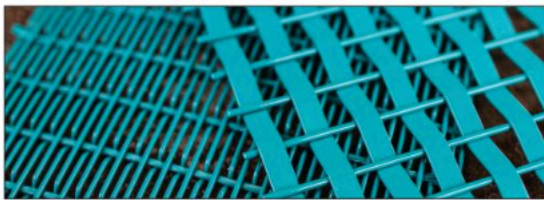
product innovation awards



1 Smith & Fong



3 Pure + FreeForm



2 GKD Metal Fabrics



Wall Coverings & Decorative Metal

1 PALM PANELS

PalmTheory is a range of striking, configurable palm panels for commercial, high-end residential, retail and hospitality interiors. The panels are available in eight configurable grain patterns that explore the use of abstract geometry, both organic and refined. As different as each pattern is, all are grounded within the discipline of the isosceles triangle. A selection of preset designs is provided for designers as a departure point for further creativity and exploration; each can be further manipulated to create new and different patterns.

JUDGE'S COMMENT: "I like the scale and applications."

Smith & Fong
PalmTheory Wall & Ceiling Panels
www.durapalm.com

CIRCLE 347

2 METAL MESH

An extremely versatile material, metal mesh is growing in popularity for use in a number of applications and GKD Metal Fabrics now offers designers and specifiers an unlimited array of color coating options. Powder coating, specialty painting and also screen printing are used for adding color to stainless steel wire mesh, resulting in colorful fabric options that are also resistant to extreme heat, cold, bending and flexing.

JUDGE'S COMMENT: "This has many applications in many typologies. Adaptive reuse projects and retrofit can integrate this product very well."

GKD Metal Fabrics
Metal Fabrics Secondary Color Capabilities
www.gkdmetalfabrics.com

CIRCLE 346

3 NEXT GEN METAL ARCHETYPES

The Specular collection is ideal for exterior metal cladding, acoustical ceilings, interior wall paneling, millwork, soffits, column covers, canopies and more. From classical forms to more complex hybrid finishes, it offers 12 unique surfaces to choose from that define the next generation of metal archetypes. With a focus on pearlescence, texture, fragmentation, and light spread, the collection's finishes include Emblem, Perlage, Brunello, Relic, Enox, Plombo, Harlem, Molten, Serra, Caxia, Akoya and Hollywood.

JUDGE'S COMMENT: "A successful pairing of form and function."

Pure + FreeForm
Specular
www.purefreeform.com

CIRCLE 345

Grounded within the discipline of triangular tiles in each panel, PalmTheory's weighty grain directs the eye and creates compelling and luxurious dimensionality.

Screenshot